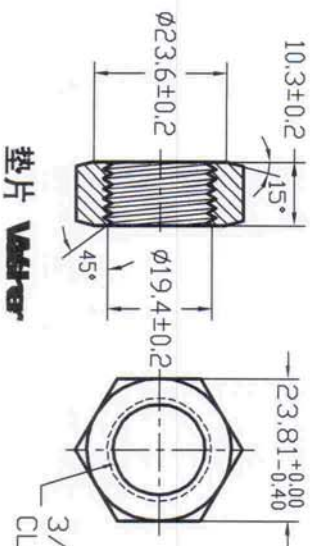
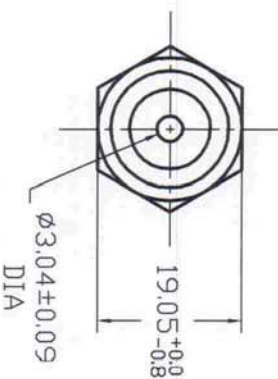


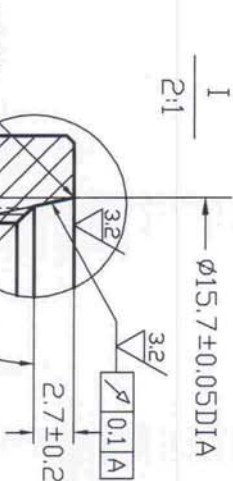
螺母 **M16**



3/4-16 UN.F.
CLASS 2B

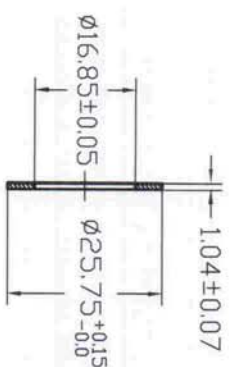


3/4-16 UN.F.
CLASS 2A

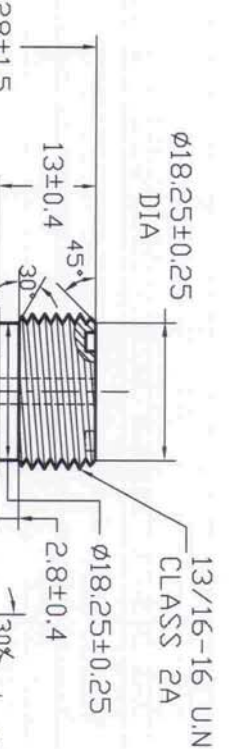


1
2:1

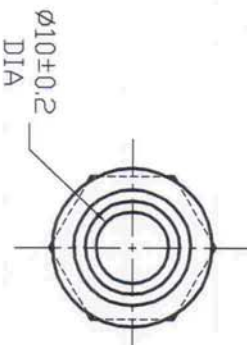
1
2:1



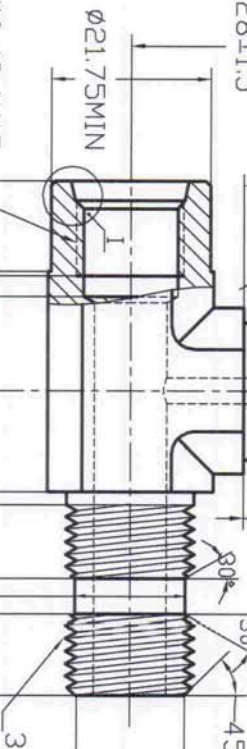
1.04±0.07
16.85±0.05
25.75±0.05



18.25±0.25
13/16-16 U.N.
CLASS 2A
13±0.4
45°
30
2.8±0.4
13/16-16 U.N.
CLASS 2A
18.25±0.25
13/16-16 U.N.
CLASS 2A
13±0.4
45°
30
2.8±0.4
13/16-16 U.N.
CLASS 2A
18.25±0.25
13/16-16 U.N.
CLASS 2A
13±0.4
45°
30
2.8±0.4
13/16-16 U.N.
CLASS 2A



10±0.2
DIA



28±1.5
21.75 MIN
9/16-18 UN.F.
CLASS 2B
12.14 (REF)
12.7 MIN
FULL TH'D
15.5 MIN
28±1.5
40.6±1.5
28.5 (REF)
16.65±0.25
10.0±0.20 FULL TH'D
16.76±0.05 DIA
4.95±0.15
26.36 MIN FULL TH'D

10±0.2
DIA

UNLESS SPECIFIED
ALL DIMENSIONS IN mm
MACHINED SURFACES Ra=3.2um
ANGLE TOLERANCES ±1°
DECIMAL TOLERANCES:
X: ±0.5
XX: ±0.25
XXX: ±0.127

未注公差
图示尺寸单位为mm
表面粗糙度Ra=3.2um
角度公差±1°
小数部分公差:

X: ±0.5
XX: ±0.25
XXX: ±0.127

未注公差
图示尺寸单位为mm
表面粗糙度Ra=3.2um
角度公差±1°
小数部分公差:

HANGZHOU HI-TECH INDUSTRY IMP. & EXP. CORP.

PART No
零件名
6807-6PT-8NW0-8FSS

SCALE:
NTS

APPD: Zhangjian
批准
日期: 05/11/13
CHK: Lijunbiao
审核
2013.11.02

MATERIAL: Chinese steel 45
FINISH: Remove all sharp edges, burrs, slivers and swarf, break all edges 0.127-0.254mm, 未除所有毛刺, 铁屑等残留物, 锐边倒钝0.127-0.254mm.
ZINC PLATED WITH TRIVALENT CHROMATE AND NO RED CORROSION IN 96 HOURS SALT SPRAY TEST. 镀三价铬钝, 银白色, 96小时盐雾试验无红锈.

REV	DATE	REVISION DETAILS	APPD
更改号	日期	更改内容	审核并批准